

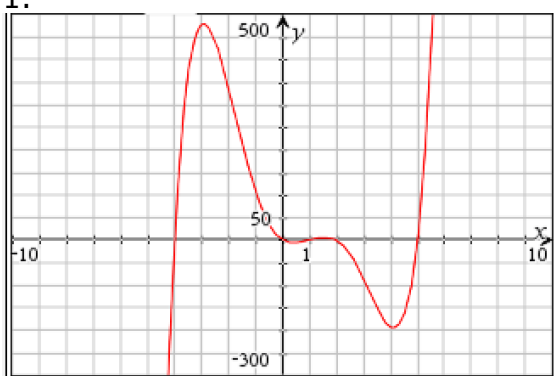
Name _____ Date _____

Unit 12- Worksheet: Analyzing Critical Points

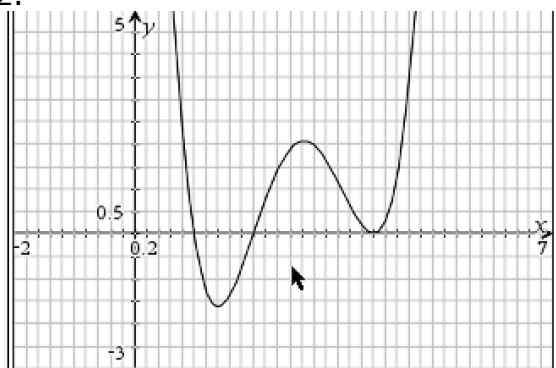
For the following polynomials, state the following:

- a. any local minima
- b. any local maxima
- c. domain and range
- d. end behavior
- e. intercepts (both x- and y-)
- f. intervals where the function is increasing
- g. intervals where the function is decreasing
- h. points of inflections

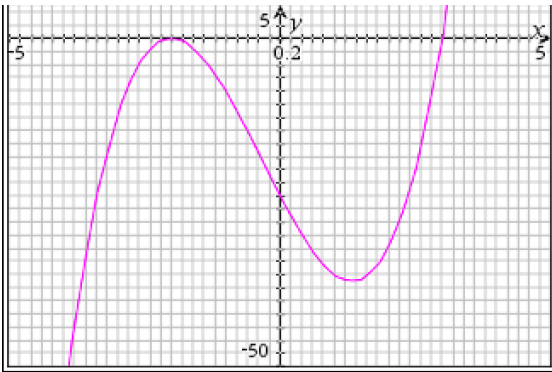
1.



2.



3.



4.

